

OLIVARI

100 years of made in Italy



Chevron OL-M248B
design Zaha Hadid



Open OL-M249B
design Rem Koolhaas



Chelsea OL-M232B
design Jean Nouvel





Mira Moon Hotel, Causeway Bay, Hong Kong
design Marcel Wanders



Crystal Royal OL-M245B
design Marcel Wanders



Radial OL-M235
design Rodolfo Dordoni



Dolce Vita OL-M243B
design Marcel Wanders



Crystal Diamond OL-M246B
design Marcel Wanders



Conca OL-M236B
design Patricia Urquiola



SUPERANTHRACITE SATINED
From Olivari's research a new finishing

Olivari introduces to its range a new finish, responding to the demands of architects and interior designers who increasingly look for products with a strong properties, that are able to be integrated with interior decor and architecture without dominating.

This has brought about SuperAnthracite Satined, the first and only finishing of its kind applied to a door handle. Very dark gray with a metallic sheen, a higher superficial hardness and the performance of a SuperFinish, with 10-year warranty.

A finish with improved quality and performances to match the already high standards of the company. Bringing new life to the handles in a game of contrasts and geometric elegance. Olivari has received the Mention of Honor ADI 2014 for its ongoing work in Research and Innovation Processes: SuperAnthracite Satined is the latest achievement reached by the company through the application and development of processes which are typical of the world of aeronautics.

OLIVARI



Twist OL-M242B
design Ben Van Berkel



Lucy OL-M231B



Lama OL-M107



Nina OL-M234



Trend OL-M228B



Aurelia OL-M185



Planet Q OL-M203



Bios OL-M204



Living OL-M222B



Link OL-M200



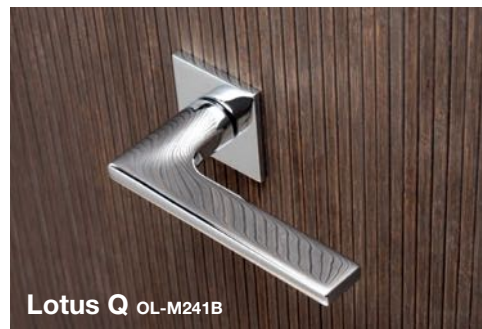
Diana OL-M206



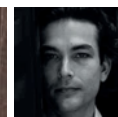
Euclide Q OL-M230B



Total OL-M207



Lotus Q OL-M241B



Lotus OL-M238B
design Javier Lopez

NEW FINISH!

Super Anthracite Satined





Melopsittacus Undulatus

Lama OL-M107
design Gio Ponti



环保镀铬，绿色建材 3000小时盐雾测试，耐久饰面，最高标准



Aurora OL-M164
design Alessandro Mendini



Ala OL-M215
design Massimo Iosa Ghini



Onda OL-M175
design Nicola Novelletto



Blade OL-M213
design Peter Marino



Selene OL-M194
design Massimo Oosa Ghini



Nina OL-M234
design Daniel Libeskind



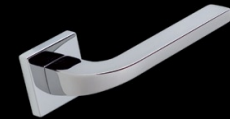
Club OL-M181
design Vico Magistretti



Blindo OL-M178
design Penta Associati



Marbella OL-M237B
design Penta Associati



Lesmo OL-M211
design Studio Olivari



Beta OL-M221B
design Joe Colombo



Madison OL-M196
design Luca Casini



Sibilla OL-M154
design Vico Magistretti



Pitagora Q OL-M240B
design Giorgetto Giugiaro



Laser OL-M176
design Richard Sapper



Wind OL-M187
design Penta Associati



Alexandra
F.A. Porsche 1989



OL-M150



OL-H150/6

OL-E150



OL-L150



OL-D122



OL-H136V6



OL-H200V6



OL-B136S
OL-B136C
(magnetic)



OL-B106S
OL-B106C
(magnetic)



OL-B101



OL-D111



OL-D109



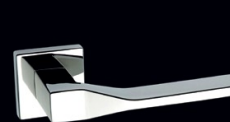
Planet OL-M195
design Luca Casini



Fin OL-M217
design Toyo Ito



Diana OL-M206
design Studio Olivari



Adamant OL-M216
design Patricia Urquiola



Compatible with
VingCard Essence

